

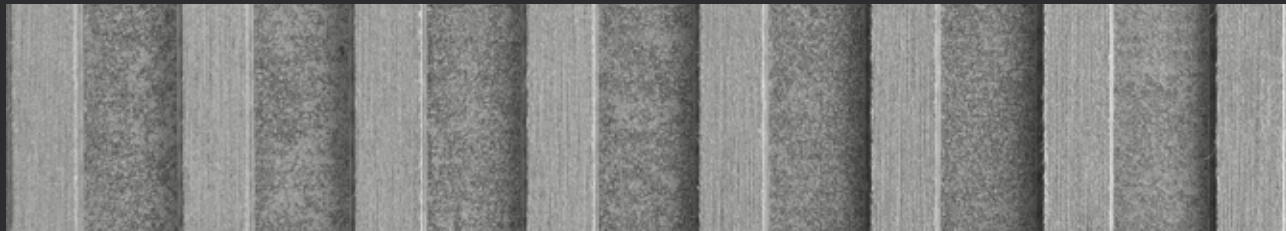


EQUITONE material sampler



## EQUITONE

EQUITONE is a through-coloured facade material designed by and for architects. Our company has produced these façade panels since the 1950's under the name "ETERNIT". Every EQUITONE panel is unique, showing the raw, untreated texture of the fibre cement base material. Fibre cement is a cement composite material that consists of cement, cellulose and mineral materials, reinforced by a visible matrix. Nothing else. The EQUITONE material comes in a maximum panel size of 1,25 x 3m (4' x 10') and can be transformed into any size or shape in the workshop or on-site. Furthermore, the material can be perforated or printed. Visible and invisible rainscreen fixing methods can be used including riveting, screwing and bonding on metal or wood supporting frames. No matter what design options you explore, the through-coloured nature of EQUITONE assures crisp, monolithic details.



LT20



LT60

Shadow effect:

8:00 AM



9:00 AM



10:00 AM



11:00 AM



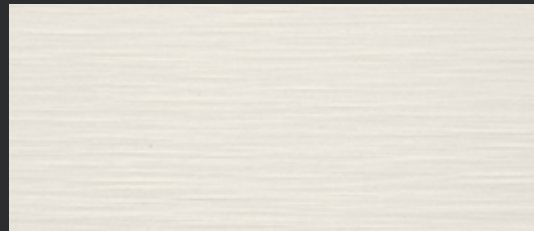
12:00 Midday



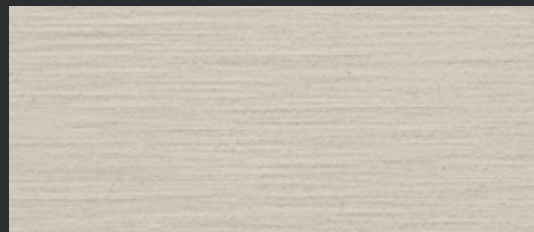
# EQUITONE [linea]

EQUITONE [linea] is a 3D shaped, through-coloured fibre cement facade material that plays with light and shadow. Linea displays a linear embossing modelled on the size and shape of a human finger. Every moment of the day, the changing angle of the daylight gives the material a different aspect. Every EQUITONE [linea] panel is unique, displaying the raw and untreated inner texture of the core fibre cement material.

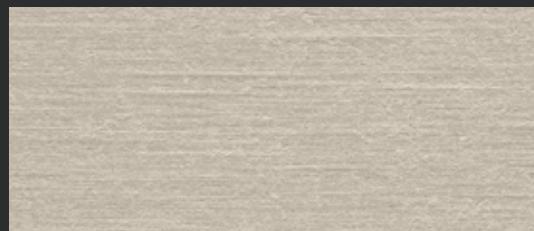
The fibre cement material comes in a large panel size and can be transformed into any size or shape in the workshop or on site. No matter what design options you explore, EQUITONE's through-coloured nature guarantees crisp, monolithic details. Both visible and invisible fastening options have been developed for EQUITONE [linea].



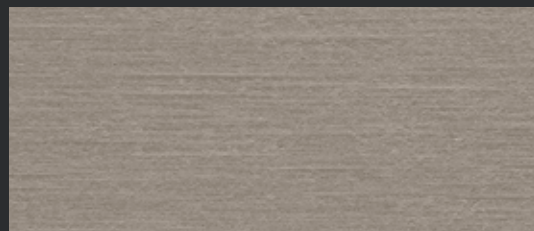
TE90



TE00



TE10



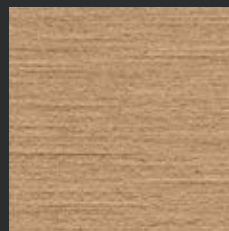
TE60



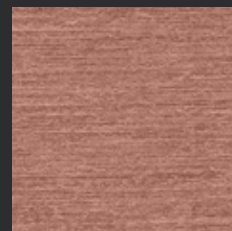
TE20



TE80



TE30

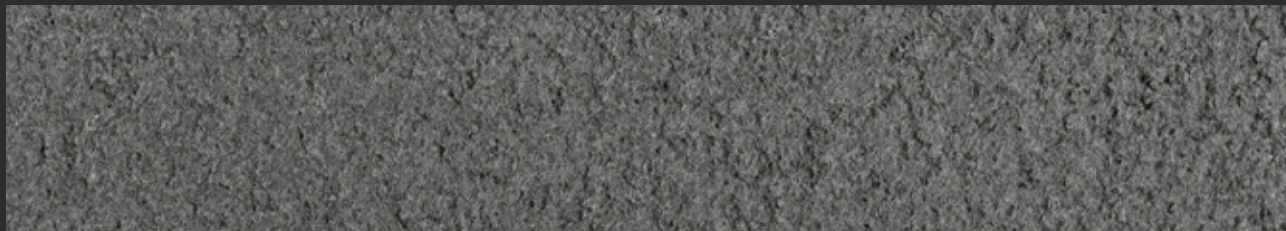


TE40

# EQUITONE [tectiva]

EQUITONE [tectiva] is a through-coloured facade material, characterised by a sanded surface and naturally occurring hues within the material.

Every tectiva panel is unique, strongly expressing the raw texture of the core eternit fibre cement material. The material comes in a large panel size and can be transformed into any size or shape in the workshop or on site. No matter what design options you explore, EQUITONE's through-coloured nature guarantees crisp, monolithic details.



MA400



MA200

# EQUITONE [materia]

EQUITONE [materia] is a through coloured facade material that accentuates the beauty of fibre cement.

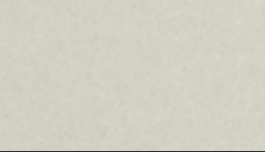
The material encompasses the characteristics of cement, whereas the fibres render its surface textured yet velvety.

The ever-changing atmosphere, gives the material natural subtle shade variations.

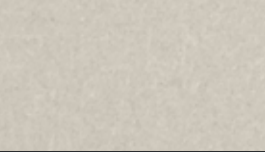
The material comes in a large panel size and can be transformed into any size or shape in the workshop or on site.



THROUGH-COLOURED



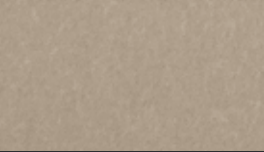
N162



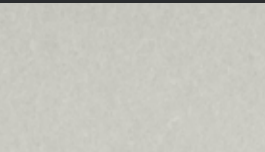
N154



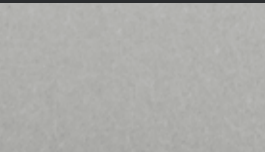
N861



N961



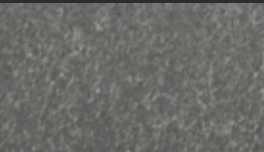
N161



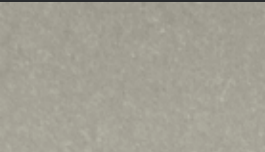
N163



N211



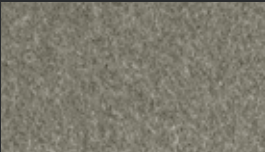
N252



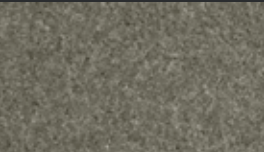
N891



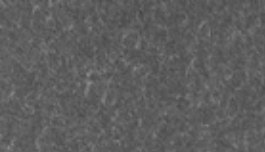
N892



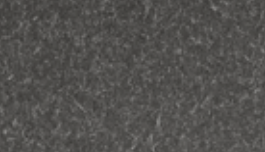
N250



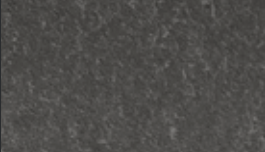
N294



N281



N251

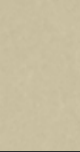


N073

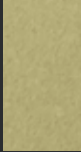


N074

SPECIAL COLOURS



N661



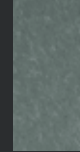
N662



N 593



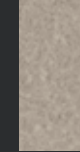
N594



N411



N412



N991



N972



N331

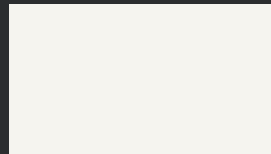


N359

Other colours available on request, subject to minimum order quantities.

# EQUITONE [natura]

EQUITONE [natura] is a through-coloured facade material. Every EQUITONE [natura] panel is unique, subtly displaying the raw texture of the core eternit fibre cement material. The material comes in a large panel size and can be transformed into any size or shape in the workshop or on site. No matter what design options you explore, EQUITONE's through-coloured nature guarantees crisp, monolithic details.



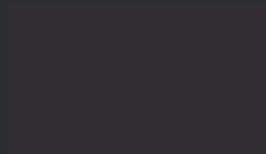
PW 141



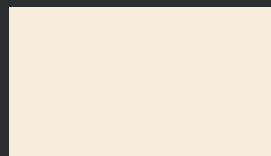
PG 243



PG 241



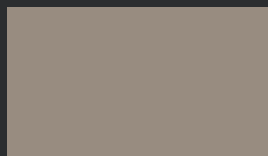
PA 041



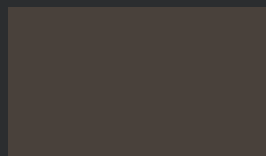
PW 841



PG 843



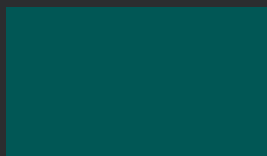
PG 844



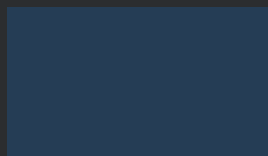
PA 944



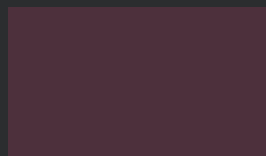
PG 542



PG 546



PG 444



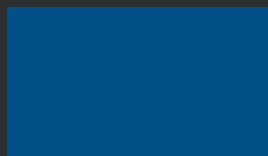
PG 342



PG 642



PG 545



PG 443



PG 341



PG 641



PG 544



PG 442



PG 742

Other colours available on request, subject to minimum order quantities.

# EQUITONE [pictura]

EQUITONE [pictura] is a fibre cement facade material with an ultra matt architectural finish. Thousands of custom-matched matt project colours are available on request. The material comes in a large panel size and can be transformed into any size or shape in the workshop or on site. The material can also be perforated or printed. No matter what design options you explore, the EQUITONE material is ideal for crisp detailing.

## DIMENSIONS

EQUITONE [linea]

THICKNESS	WIDTH	LENGTHS
10 mm	1220 mm	2500 - 3050 mm

EQUITONE [tectiva]

8 mm	1220 mm	2500 - 3050 mm
------	---------	----------------

EQUITONE [materia]

8 mm	1250 mm	2500 - 3100 mm
------	---------	----------------

EQUITONE [natura]

8 mm - 12 mm	1250 mm	2500 - 3100 mm
--------------	---------	----------------

EQUITONE [pictura]

8 mm - 12 mm	1250 mm	2500 - 3100 mm
--------------	---------	----------------

This colour chart shows the broad range of available colours. However, a 100% accurate representation of the colours is not technically feasible in this overview. The final choice of colours needs to be based on samples. Request your sample at [www.equitone.com](http://www.equitone.com).





[www.equitone.com](http://www.equitone.com)

Arch.: Studio Weave, London